

# **DIG INTO PROPORTIONAL RELATIONSHIPS: A BAGEL PROBLEM**

Presented by MathLinks Authors  
Mark Goldstein and Shelley Kriegler

For more information about our core programs for middle school and  
intervention programs for grades 6-9, please visit:

[www.mathandteaching.org](http://www.mathandteaching.org)



## In this session, we will:

- examine properties of a proportional relationship that are revealed through different representations of linear functions

# A Context



SHMEAR 'N THINGS  
4 bagels for \$3.00

What is the cost of one bagel?

$$\left( \frac{3.00}{4} = 0.75 \right)$$

At Smear 'n Things, each bagel costs \$.75.



**Let's dig deeper!**

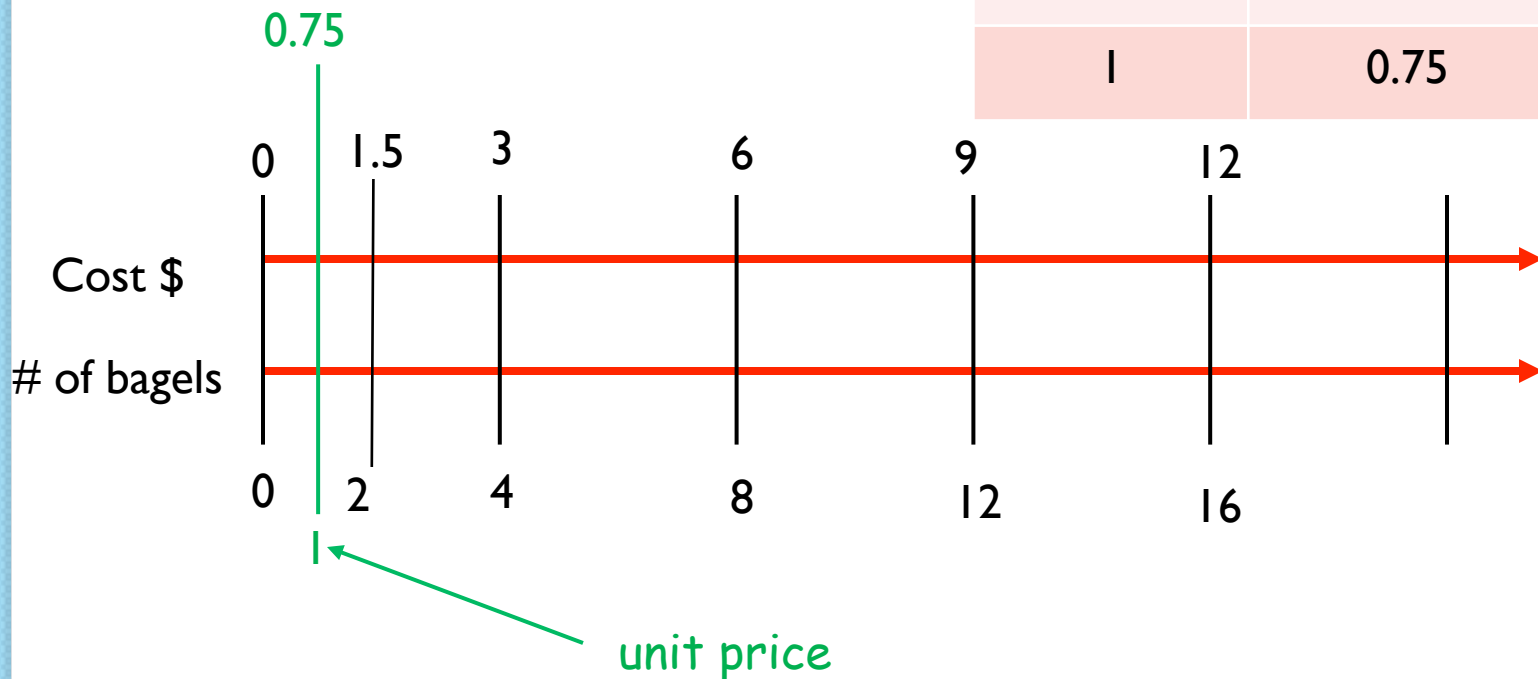
# Double Number Line

**SHMEAR 'N THINGS**

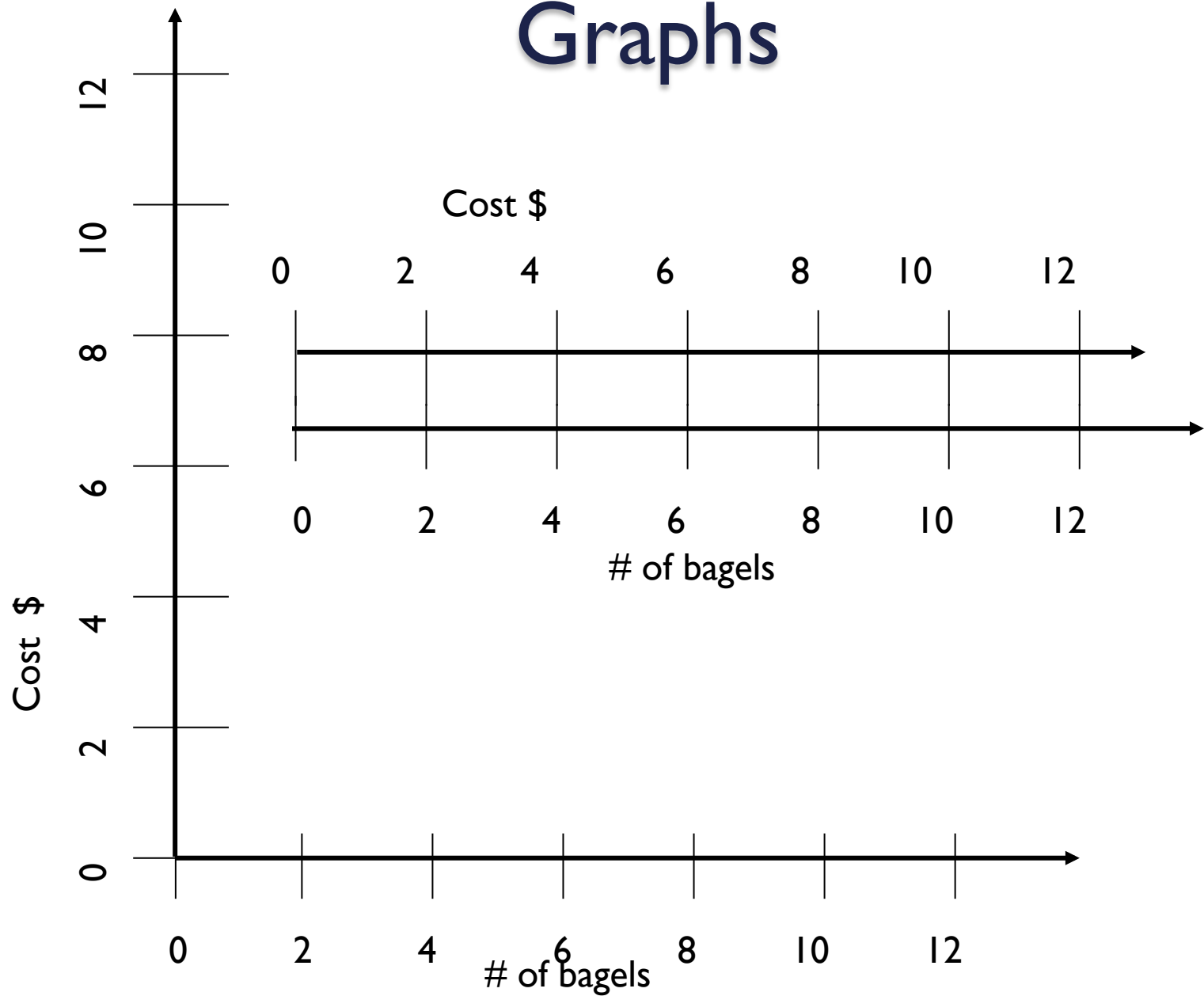
4 bagels for \$3.00

## Shmear 'n Things

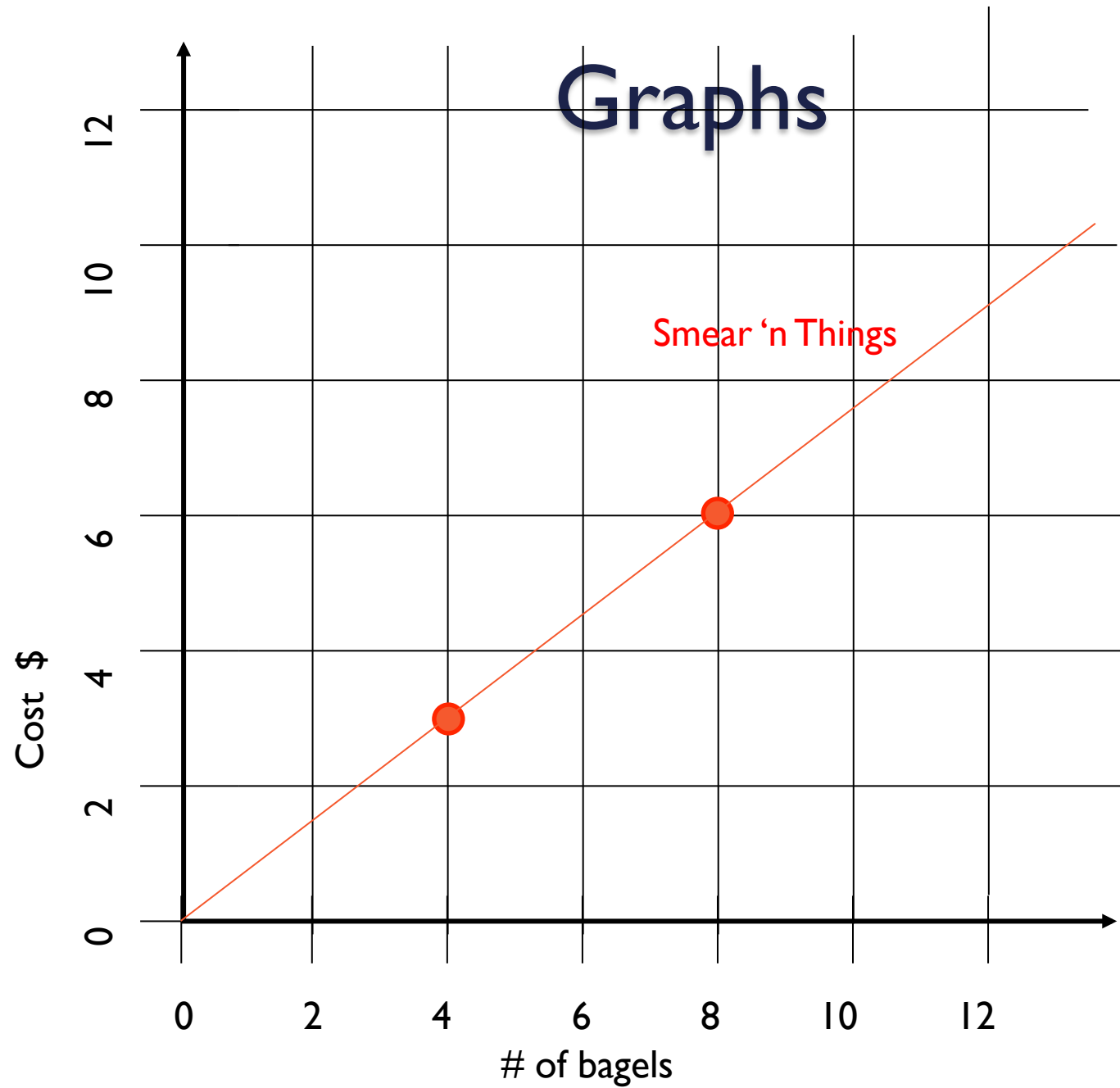
# of bagels (x)	Cost in \$ (y)
4	3
8	6
12	9
1	0.75



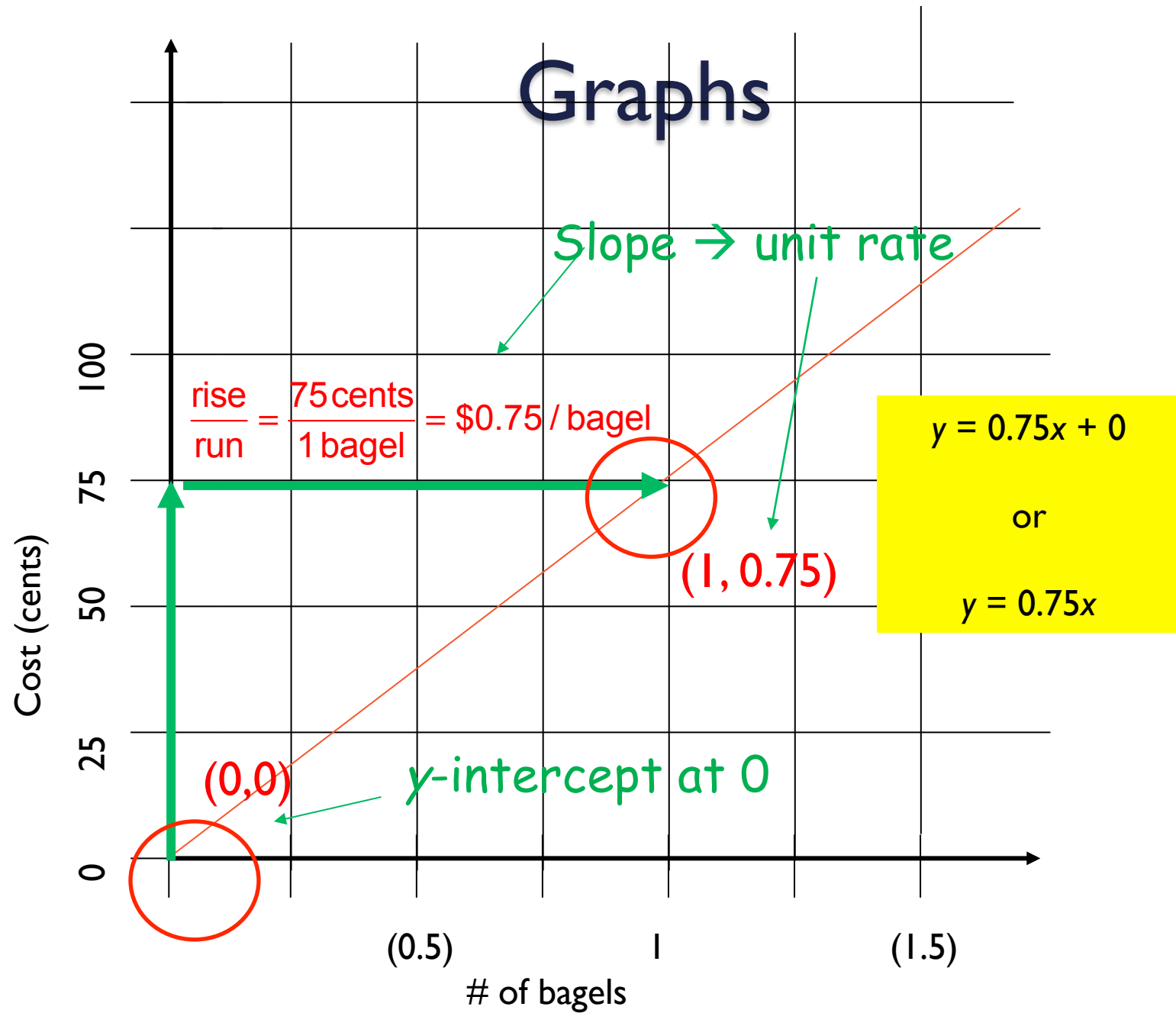
# Graphs



# Graphs



# Graphs



## A Different Scenario

SHMEAR 'N THINGS

4 bagels for \$3.00

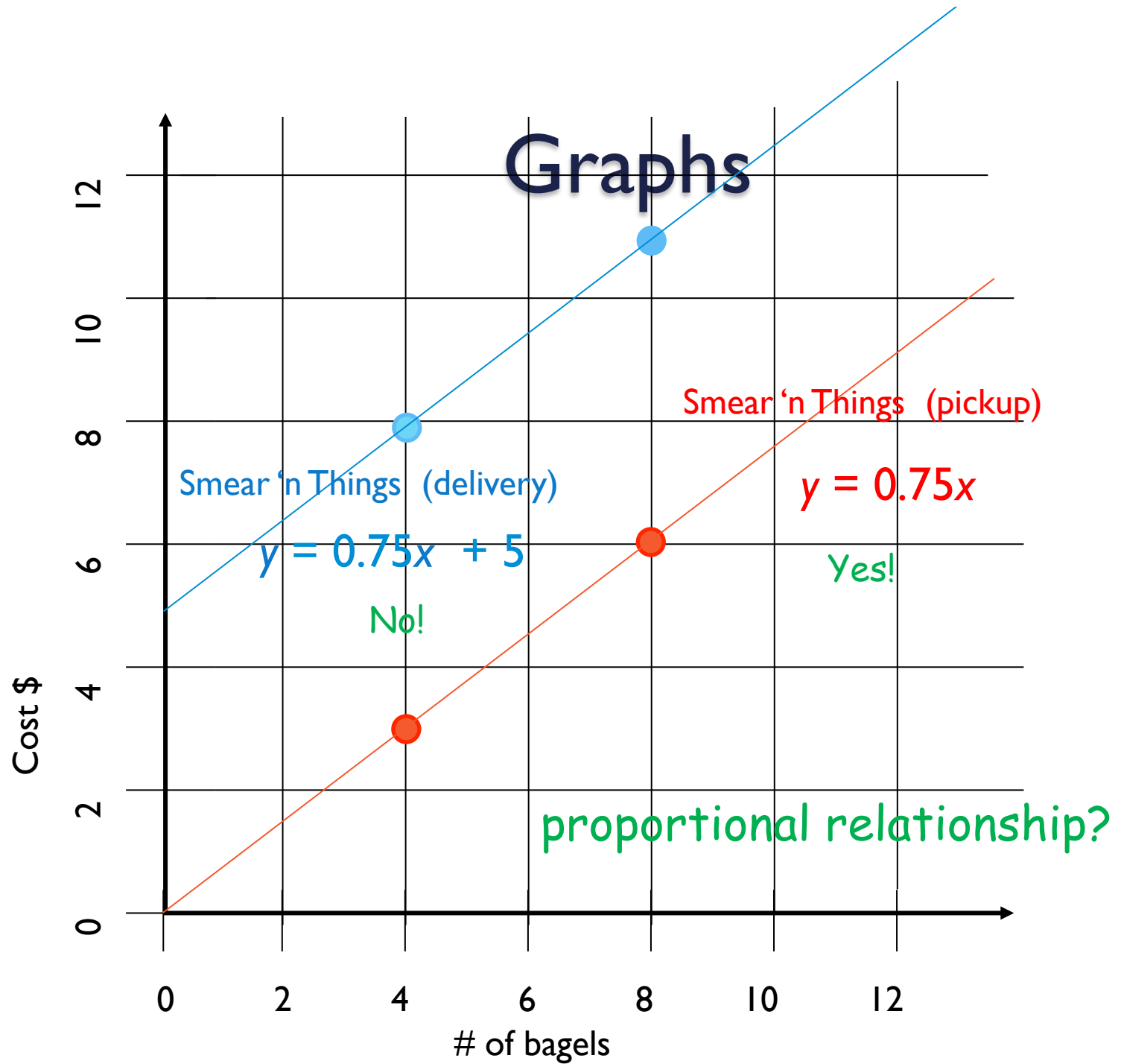
Shmear 'n Things Pick-up in store	
# of bagels (x)	Cost in \$ (y)
4	3
8	6
16	12

$$y = 0.75x$$

Shmear 'n Things Delivery charge: \$5.00	
# of bagels (x)	Cost in \$ (y)
4	8
8	11
16	17

$$y = 0.75x + 5$$

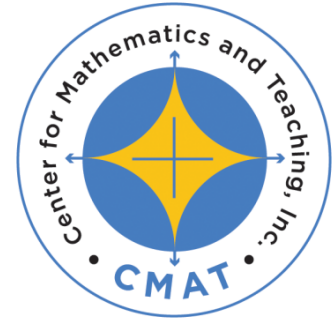
# Graphs





## In this session, we

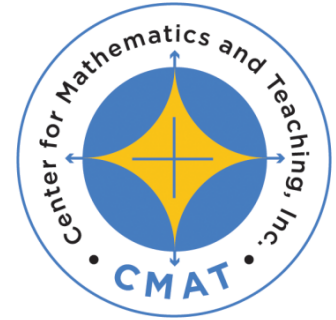
- connected slope and unit rate to a context
- examined properties of proportional and non-proportional relationships.



## OUR PROGRAMS:

- Comprehensive 6-8 curriculum
- Customized intervention grades 6-9
- Special Education programs
- Supplemental programs
- Professional development

For more information, please visit our website at  
[www.mathandteaching.org](http://www.mathandteaching.org)



# THANK YOU!

Shelley Kriegler  
(shelley@mathandteaching.org)

Mark Goldstein  
(mark@mathandteaching.org)

To download handouts or view webinars go to  
**[www.mathandteaching.org/webinars](http://www.mathandteaching.org/webinars)**